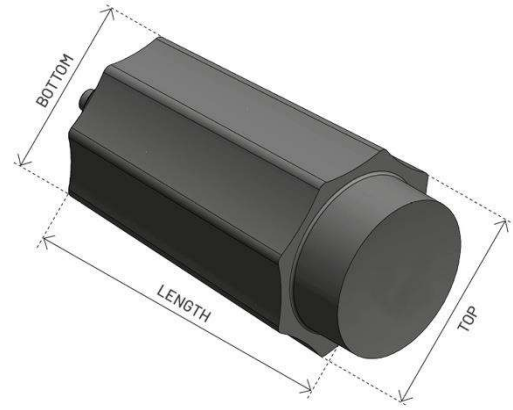


M2.06.01 rev.2 – 2nd January 2024.

Table of ingots dimensions and weights.

All weights and dimensions must be considered indicative.



Polygonal Ingots

INGOT	SIDES n°	INGOTS PER HEAT		DIMENSIONS				TOTAL WEIGHT [kg]		WEIGHT WITHOUT TOP [kg]		BOTTOM WEIGHT [kg]
				TOP Ø [mm]	BOTTOM Ø [mm]	LENGTH [mm]						
						min	max	min	max			
P6700	8	5	6	820	710	1.650		6.500		5.650		N
P8500	8	4		940	780	1.650		8.100		7.150		N
P11000	8	3	4	1.050	920	1.570		10.550		9.050		100
P13000H	8	2	4	1.050	920	1.560	1.920	11.000	13.300	9.050	11.350	100
P16000	8	2	3	1.250	1.090	1.690		16.000		13.800		160
P22000H	8	2		1.260	1.090	1.680	2.310	16.720	22.400	13.840	19.500	160
P25000	8	2		1.480	1.310	1.700		24.650		20.550		1.000*
P27000	8	1	2	1.500	1.310	1.860		27.250		22.500		1.000*
P29000	8	1		1.520	1.310	2.010		29.700		24.600		1.000*
P31000	8	1		1.510	1.310	2.180		31.800		26.700		1.000*
P35000H	16	1		1.590	1.400	1.930	2.580	32.000	41.900	27.170	37.070	1.000*
P45000H	16	1		1.790	1.530	2.180	2.770	45.350	56.600	37.530	48.780	1.200

The number of ingots is related to the total weight of the cast:

- Minimum melt weight = 26.600 kg
- Maximum AOD capacity = 40.000 kg

Different ingots or special requests of weight may be discussed with the Commercial Department.

*In agreement with the quality dept. is possible to require a bottom of 500Kg.



ASONEXT
Steeled for the future

ASONEXT S.p.A. Società Benefit Unipersonale
Via Seriola 122 - 25035 Ospitaletto (BS) ITALY
P. +39030.6841011 - info@asonext.com
www.asonext.com